

The selection is detailed on page 11



H51

Embedded Diaphragm Sanitary Type

Product application

The food and beverage industry
Biochemical and pharmaceutical
plant, active agent production
Production of sterile raw
materials in the chemical industry

Functional characteristics

Quick cleaning of measuring
points without residue
Health trade certificate
Suitable for SIP (in situ
sterilization) and CIP (in situ
cleaning) applications

Product description

Diaphragm seals protect measuring instruments from corrosive, viscous, crystalline, corrosive, highly viscous, environmentally harmful or toxic media. A diaphragm made of the appropriate material separates the measuring instrument from the measured medium. As a result, the measuring instrument can be used for the most difficult measurements as long as it is equipped with a proper diaphragm seal.

The filling liquid inside the system (the most suitable liquid can be selected for the specific application) hydraulically conducts the pressure to the measuring instrument. Diaphragm seals are available in different designs and materials to meet all application requirements. When selecting diaphragm seals, users need to pay attention to two important criteria: one is the type of process connector (flange, thread and sterile connector); the other is the basic manufacturing method.

Diaphragm seals with aseptic connections are DIN11864 compliant and EHEDG certified to optimally integrate into the piping to meet the high standards required for hygienic applications. The diaphragm seal system can withstand the high temperature of the clean steam during the SIP process and achieve a sterile connection between the tested medium and the diaphragm seal.

The diaphragm seal and measuring instrument can be assembled directly (standard) or by cooling element or flexible capillary (optional). In terms of material selection, the upper cavity of the sealing diaphragm and the diaphragm are made of the same material. The standard material for these sealing diaphragms is 316L (1.4435) stainless steel, of course, we can also provide diaphragm products made of other special materials according to customer requirements.



Technical parameter

Model H51	Standard	Selectable
Pressure range ¹⁾		
<ul style="list-style-type: none"> Threaded pipe connection according to DIN 11864-1 	0...0.06 MPa to 0...4 MPa [0...8.7 psi to 0...580 psi] (to DN 40) 0...0.06 MPa to 0...2.5 MPa [0...8.7 psi to 0...363 psi] (from DN 50)	
<ul style="list-style-type: none"> Flange connection according to DIN 11864-2 	0...0.06 MPa to 0...2.5 MPa [0...8.7 psi to 0...363 psi] (to DN 40) 0...0.06 MPa to 0...1.6 MPa [0...8.7 psi to 0...232 psi] (from DN 50)	
<ul style="list-style-type: none"> Clamp connection according to DIN 11864-3²⁾ 	0...0.06 MPa to 0...4 MPa [0...8.7 psi to 0...580 psi] (to DN 40) 0...0.06 MPa to 0...2.5 MPa [0...8.7 psi to 0...363 psi] (to DN 65) 0...0.6 bar to 0...1.6 MPa [0...8.7 psi to 0...232 psi] (from DN 80) Or all other equivalent mixing and vacuum ranges	
Cleanliness level of liquid connected components	No oil, no fat, in accordance with ASTM G93-03 standard F(<1,000 mg/m ²)	No oil, no fat, in accordance with ASTM G93-03 Class D standard and ISO 15001 (< 220 mg/m ²)
		No oil, no fat, in accordance with ASTM G93-03 Class C standard and ISO 15001 (< 66 mg/m ²)
Place of origin of liquid parts	Internation	European Union, Switzerland, United States
Surface roughness of liquid connecting parts	Ra ≤0.76µm [30µin] , Comply with ASME BPE SF3 standard (except welds)	Ra ≤0.38µm [15µin] , Meet ASME BPE SF4 standard, Applicable to electropolished surfaces only (except welds)
How the instrument is connected	Axial adapter	G1/2 internal thread G1/4 internal thread 1/2NPT internal thread 1/4NPT internal thread
Installation mode	Direct connection	capillaries
		Cooling element
Vacuum service	Basic vacuum treatment	Advanced high temperature and high vacuum treatment
		High temperature and high vacuum treatment
Process connection	Basic vacuum treatment DIN 11866 Classes A and B (or DIN 11850 and DIN EN ISO 1127) See page 3 overview "Sterile connection, DIN 11864 compliant, A-seal" See "Dimensions" from page 5 Others are available on request	
Diaphragm seal marks	Meets valid 3-A standards	
Meter mounting bracket (Capillary option only)	Model H, DIN 16281, 100mm, aluminum, black	
	Type H, DIN 16281, 100mm, stainless steel	
	Pipe bracket mounting for Ø20... 80mm [0.787... 3.146 in] pipe, steel	

1) The maximum pressure range depends on the choice of process connection. See PN nominal pressure.

2) A higher pressure range can be provided according to requirements (the maximum pressure range considers the rated pressure of the clamp)

Materials

Diaphragm seals the upper part	Liquid connection unit ³⁾
1.4435 (316L)Stainless steel	1.4435 (316L) stainless steel
1.4435 (316L) Stainless steel, electropolished ⁴⁾	1.4435 (316L) Stainless steel, electropolished ⁴⁾
1.4539 (904L) stainless steel	1.4539 (904L) stainless steel
Hastelloy C22 (2.4602)	Hastelloy C22 (2.4602)
Hastelloy C276 (2.4819)	Hastelloy C276 (2.4819)

3) The material code is printed on the parts to ensure 100% material traceability

4) Only when the surface roughness of the liquid part Ra = 0.38 µm



© 400-860-9760

For more product information, please visit www.ludwig-schneider.com.cn

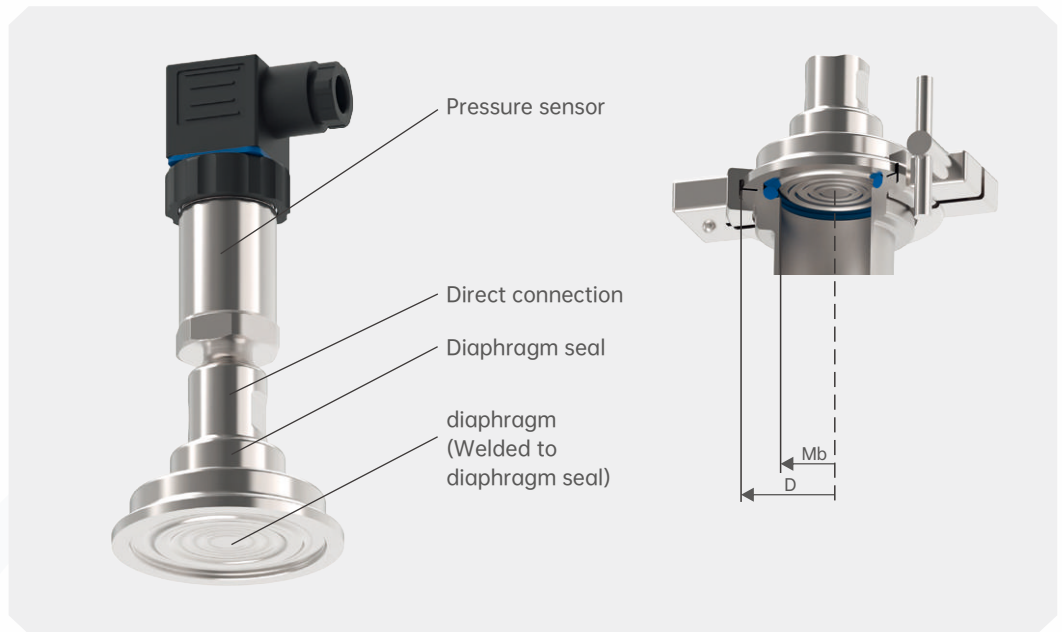
Installation example

The H51 sanitary cylinder pressure sensor has been installed

Legend

Mb Effective diameter of diaphragm

D The outer diameter of the diaphragm



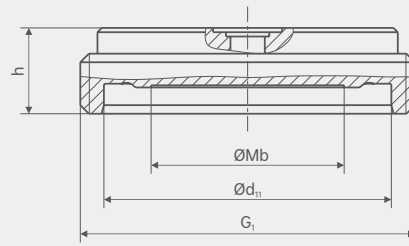
Process connection

Connection type	Edition	
Threaded pipe connections according to DIN 11864-1	Grooved coupling nut	
	Threaded joint	
Flange connection according to DIN 11864-2	Notched flange	
	Slotted flange	
Hoop connection according to DIN 11864-3	Notch clamp	
	Slotted clamp	

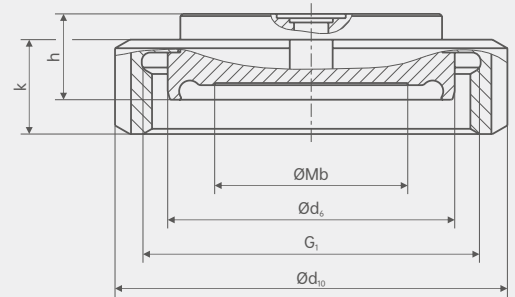
Size mm [in]

Sterile threaded pipe connection, compliant Standard DIN 11864-1

Threaded joint



Grooved coupling nut



Process connection type: DIN 11864-1 A-type sterile threaded pipe connection

Piping standards: Piping conforms to DIN 11866 Class A or DIN 11850 Class 2 standards

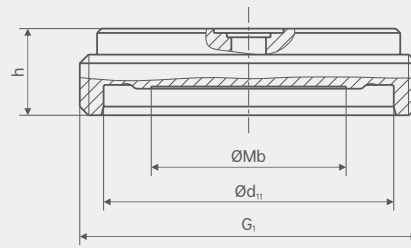
DN	Conduit Outer diameter Øx Wall thickness mm [in]	PN ¹⁾	Size mm [in]							
			Mb	d ₆	d ₁₁	G ₁	h	d ₁₀	k	Sterile O-ring
25	29 x 1.5 [1.142 x 0.071]	4	22 [0.866]	42.9 [1.689]	43 [1.693]	RD 52 x 1/6 [2.047 x 1/6]	20 [0.787]	63 [2.48]	21 [0.827]	29 x 1.5 [1.142 x 0.071]
32	35 x 1.5 [1.378 x 0.071]	4	25 [0.984]	48.9 [1.925]	49 [1.929]	RD 58 x 1/6 [2.283 x 1/6]	20 [0.787]	70 [2.756]	21 [0.827]	35 x 1.5 [1.378 x 0.071]
40	41 x 1.5 [1.614 x 0.071]	4	35 [1.378]	54.9 [2.161]	55 [2.165]	RD 65 x 1/6 [2.559 x 1/6]	20 [0.787]	54.9 [2.161]	21 [0.827]	41 x 1.5 [1.614 x 0.071]
50	53 x 1.5 [2.087 x 0.071]	2.5	45 [1.772]	66.9 [2.634]	67 [2.638]	RD 78 x 1/6 [3.071 x 1/6]	20 [0.787]	66.9 [2.634]	22 [0.866]	53 x 1.5 [2.087 x 0.071]
65	70 x 2 [2.756 x 0.078]	2.5	60 [2.362]	84.9 [3.343]	85 [3.346]	RD 95 x 1/6 [3.74 x 1/6]	20 [0.787]	84.9 [3.343]	25 [0.984]	70 x 2 [2.756 x 0.078]
80	85 x 2 [3.346 x 0.078]	2.5	72 [2.835]	98.9 [3.894]	99 [3.898]	RD 110 x 1/4 [4.331 x 1/4]	20 [0.787]	98.9 [3.894]	29 [1.142]	85 x 2 [3.346 x 0.078]
100	104 x 2 [4.094 x 0.078]	2.5	90 [3.543]	118.9 [4.681]	119 [4.685]	RD 130 x 1/4 [5.118 x 1/4]	20 [0.787]	118.9 [4.681]	31 [1.22]	104 x 2 [4.094 x 0.078]

1) The allowable pressure unit is MPa; These pressures are only allowed under conditions where appropriate sealing materials are used (temperature range -10 to +140 °C).

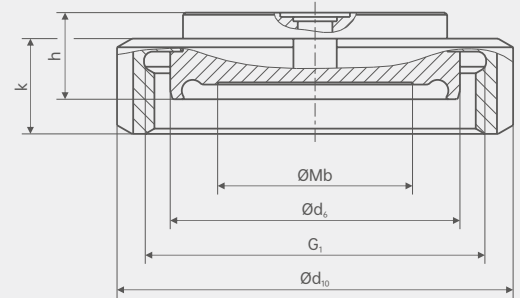
Size mm [in]

Sterile threaded pipe connection, compliant DIN 11864-1

Threaded joint



Grooved coupling nut



Process connection type: DIN 11864-1 A-type sterile threaded pipe connection

Piping standards: Piping conforms to DIN 11866 Class B or DIN ISO 1127 Class 1 standards

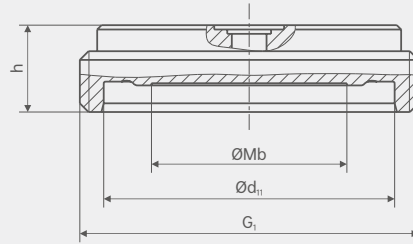
DN	Conduit Outer diameter \varnothing x Wall thickness mm [in]	PN ¹⁾	Size mm [in]							
			Mb	d ₆	d ₁₁	G ₁	h	d ₁₀	k	Sterile O-ring
26.9	26.9x1.6 [1.059x0.063]	4	22 [0.866]	42.9 [1.689]	43 [1.693]	RD 52 x 1/6 [2.047 x 1/6]	20 [0.787]	63 [2.48]	21 [0.827]	26 x 3.5 [1.024 x 0.1378]
33.7	33.7x2 [1.327x0.078]	4	25 [0.984]	48.9 [1.925]	49 [1.929]	RD 58 x 1/6 [2.283 x 1/6]	20 [0.787]	70 [2.756]	21 [0.827]	32 x 5 [1.26 x 0.197]
42.4	42.4x2 [1.669x0.078]	4	35 [1.378]	54.9 [2.161]	55 [2.165]	RD 65 x 1/6 [2.559 x 1/6]	20 [0.787]	78 [3.071]	21 [0.827]	40.5 x 5 [1.594 x 0.197]
48.3	48.3x2 [1.902x0.078]	2.5	45 [1.772]	66.9 [2.634]	67 [2.638]	RD 78 x 1/6 [3.071 x 1/6]	20 [0.787]	92 [3.622]	22 [0.866]	46.5 x 5 [1.831 x 0.197]
60.3	60.3x2 [2.374x0.078]	2.5	60 [2.362]	84.9 [3.343]	85 [3.346]	RD 95 x 1/6 [3.74 x 1/6]	20 [0.787]	112 [4.409]	25 [0.984]	58.5 x 5 [1.831 x 0.197]
76.1	76.1x2 [2.996x0.078]	2.5	72 [2.835]	98.9 [3.894]	99 [3.898]	RD 110 x 1/4 [4.331 x 1/4]	20 [0.787]	127 [5]	29 [1.142]	73.5 x 5 [2.894 x 0.197]
88.9	88.9x2.3 [3.5x0.091]	2.5	90 [3.543]	118.9 [4.681]	119 [4.685]	RD 130 x 1/4 [5.118 x 1/4]	20 [0.787]	148 [5.827]	31 [1.22]	86.5 x 5 [3.406 x 0.197]

1) The allowable pressure unit is MPa; These pressures are only allowed under conditions where appropriate sealing materials are used (temperature range -10 to +140 °C).

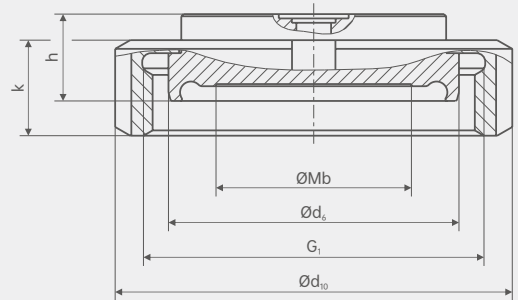
Size mm [in]

Sterile threaded pipe connection, compliant DIN 11864-1

Threaded joint



Grooved coupling nut



Process connection type: DIN 11864-1 A-type sterile threaded pipe connection

Piping standards: Piping conforms to DIN 11866 Class B or DIN ISO 1127 Class 1 standards

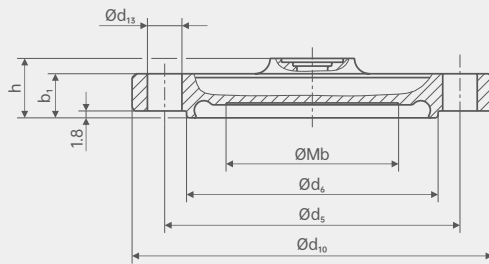
DN	Conduit Outer diameter \varnothing x Wall thickness mm [in]	PN ¹⁾	Size mm [in]							
			Mb	d ₆	d ₁₁	G ₁	h	d ₁₀	k	Sterile O-ring
1"	25.4x1.65 [1.831x0.065]	4	22 [0.866]	42.9 [1.689]	43 [1.693]	RD 52 x 1/6 [2.047 x 1/6]	20 [0.787]	63 [2.48]	21 [0.827]	24 x 3,5 [0.945 x 0.1378]
1 1/2"	42.4x1.65 [1.669x0.065]	4	32 [1.26]	54.9 [2.161]	55 [2.165]	RD 65 x 1/6 [2.559 x 1/6]	20 [0.787]	78 [3.071]	21 [0.827]	37 x 5 [1.457 x 0.197]
2"	48.3x1.65 [1.902x0.065]	2.5	45 [1.772]	66.9 [2.634]	67 [2.638]	RD 78 x 1/6 [3.071 x 1/6]	20 [0.787]	92 [3.622]	22 [0.866]	50 x 5 [1.969 x 0.197]
2 1/2"	60.3x1.65 [2.374x0.065]	2.5	52 [2.047]	84.9 [3.343]	85 [3.346]	RD 95 x 1/6 [3.74 x 1/6]	20 [0.787]	112 [4.409]	25 [0.984]	62 x 5 [2.441 x 0.197]
3"	76.1x1.65 [2.996x0.065]	2.5	60 [2.362]	98.9 [3.894]	99 [3.898]	RD 110 x 1/4 [4.331 x 1/4]	20 [0.787]	127 [5]	29 [1.142]	75 x 5 [2.953 x 0.197]
4"	88.9x2.11 [3.5x0.083]	2.5	90 [3.543]	118.9 [4.681]	119 [4.685]	RD 130 x 1/4 [5.118 x 1/4]	20 [0.787]	148 [5.827]	31 [1.22]	100 x 5 [3.937 x 0.197]

1) The allowable pressure unit is MPa; These pressures are only allowed under conditions where appropriate sealing materials are used (temperature range -10 to +140 ° C).

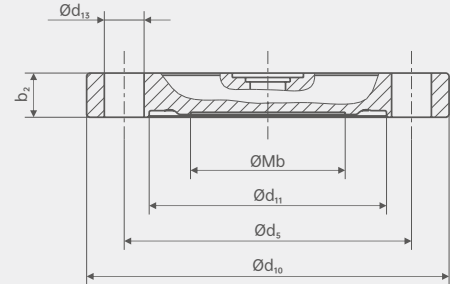
Size mm [in]

Sterile flange connection,
compliant DIN 11864-2

Slotted flange



Notched flange



Process connection type: DIN 11864-2 A-type sterile flange connection

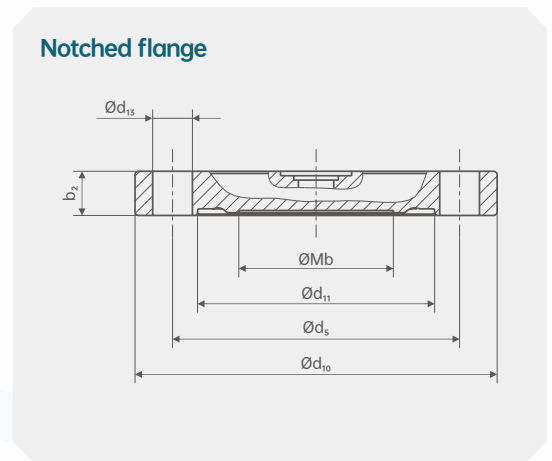
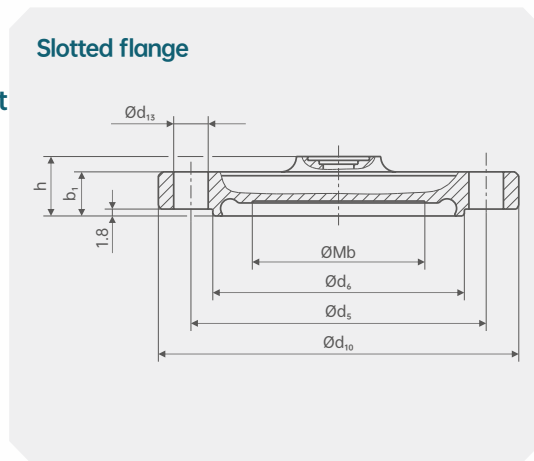
Piping standards: Piping conforms to DIN 11866 Class A or DIN 11850 Class 2 standards

DN	Conduit Outer diameter Øx Wall thickness mm [in]	PN ¹⁾	Size mm [in]									
			Mb	d ₆	d ₁₁	d ₅	d ₁₀	h	b ₁	b ₂	d ₁₃	Sterile O-ring
25	29x1.5 [1.142x0.071]	2.5	22 [0.866]	38.3 [1.508]	38.4 [1.512]	53 [2.087]	70 [2.756]	15.5 [0.61]	11.5 [0.071]	10 [0.394]	4xØ 9 [0.354]	28 x 3.5 [1.102 x 0.1378]
32	35x1.5 [1.378x0.071]	2.5	25 [0.984]	47.6 [1.878]	47.7 [1.878]	59 [2.323]	76 [2.992]	15.5 [0.61]	11.5 [0.071]	10 [0.394]	4xØ 9 [0.354]	34 x 5 [1.339 x 0.197]
40	41x1.5 [1.614x0.071]	2.5	35 [1.378]	53.6 [2.11]	53.7 [2.114]	65 [2.559]	82 [3.228]	15.5 [0.61]	11.5 [0.071]	10 [0.394]	4xØ 9 [0.354]	40 x 5 [1.575 x 0.197]
50	53x1.5 [2.087x0.071]	1.6	45 [1.772]	65.6 [2.583]	65.7 [2.587]	77 [3.032]	94 [3.7]	15.5 [0.61]	11.5 [0.071]	10 [0.394]	4xØ 9 [0.354]	52 x 5 [2.047 x 0.197]
65	70x2 [2.756x0.078]	1.6	60 [2.362]	81.6 [3.213]	81.7 [3.217]	95 [3.74]	113 [4.449]	15.5 [0.61]	11.5 [0.071]	10 [0.394]	8xØ 9 [0.354]	68 x 5 [2.677 x 0.197]
80	85x2 [3.346x0.078]	1.6	72 [2.835]	97.6 [3.843]	97.7 [3.846]	112 [4.409]	133 [5.236]	17.5 [0.689]	13.5 [0.531]	12 [0.472]	8xØ 11 [0.433]	83 x 5 [3.268 x 0.197]
100	104x2 [4.094x0.078]	1.6	90 [3.543]	116.6 [4.591]	116.7 [4.594]	137 [5.394]	159 [6.2598]	19.5 [0.768]	15.5 [0.61]	14 [0.551]	8xØ 11 [0.433]	102 x 5 [4.016 x 0.197]

1) The allowable pressure unit is MPa; These pressures are only allowed under conditions where appropriate sealing materials are used (temperature range -10 to +140 °C).

Size mm [in]

Sterile flange connection, compliant DIN 11864-2



Process connection type: DIN 11864-2 A-type sterile flange connection

Piping standards: Piping conforms to DIN 11866 Class B or DIN ISO 1127 Class 1 standards

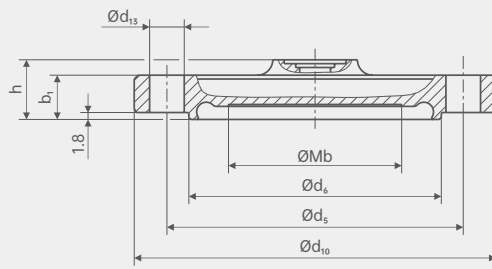
DN	Conduit Outer diameter Øx Wall thickness mm [in]	PN ¹⁾	Size mm [in]									
			Mb	d ₆	d ₁₁	d ₅	d ₁₀	h	b ₁	b ₂	d ₁₃	Sterile O-ring
26.9	26.9x1.6 [1.059x0.063]	2.5	22 [0.866]	36 [1.417]	36.1 [1.421]	52 [2.047]	69 [2.717]	15.5 [0.61]	11.5 [0.071]	10 [0.394]	4xØ 9 [0.354]	26 x 3.5 [1.024 x 0.1378]
33.7	33.7x2 [1.327x0.078]	2.5	25 [0.984]	45.3 [1.783]	45.4 [1.787]	57 [2.244]	74 [2.913]	15.5 [0.61]	11.5 [0.071]	10 [0.394]	4xØ 9 [0.354]	32 x 5 [1.2598 x 0.197]
42.4	42.4x2 [1.669x0.078]	1.6	35 [1.378]	54 [2.126]	54.1 [2.1299]	65 [2.559]	82 [3.228]	15.5 [0.61]	11.5 [0.071]	10 [0.394]	4xØ 9 [0.354]	40.5 x 5 [1.594 x 0.197]
48.3	48.3x2 [1.902x0.078]	1.6	40 [1.575]	59.9 [2.358]	60 [2.362]	71 [2.795]	88 [3.465]	15.5 [0.61]	11.5 [0.071]	10 [0.394]	4xØ 9 [0.354]	46.5 x 5 [1.831 x 0.197]
60.3	60.3x2 [2.374x0.078]	1.6	52 [2.047]	71.9 [2.831]	72 [2.835]	85 [3.346]	103 [4.055]	15.5 [0.61]	11.5 [0.071]	10 [0.394]	8xØ 9 [0.354]	58.5 x 5 [1.831 x 0.197]
76.1	76.1x2 [2.996x0.078]	1.6	60 [2.362]	88.1 [3.469]	88.1 [3.469]	104 [4.094]	125 [4.921]	17.5 [0.689]	13.5 [0.531]	12 [0.472]	8xØ 11 [0.433]	73.5 x 5 [2.894 x 0.197]
88.9	88.9x2.3 [3.5x0.091]	1.6	72 [2.835]	100.9 [3.972]	101 [3.976]	116 [4.567]	137 [5.394]	19.5 [0.768]	13.5 [0.531]	12 [0.472]	8xØ 11 [0.433]	86.5 x 5 [3.406 x 0.197]

1) The allowable pressure unit is MPa; These pressures are only allowed under conditions where appropriate sealing materials are used (temperature range -10 to +140 °C).

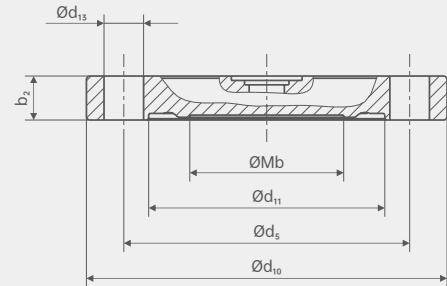
Size mm [in]

Sterile flange connection,
compliant DIN 11864-2

Slotted flange



Notched flange



Process connection type: DIN 11864-2 A-type sterile flange connection

Piping standards: Piping conforms to DIN 11866 Class C or ASME BPE 1997 standards

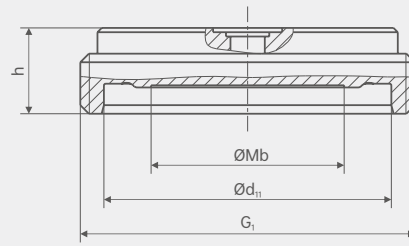
DN	Conduit Outer diameter \varnothing x Wall thickness mm [in]	PN ¹⁾	Size mm [in]									
			Mb	d ₆	d ₁₁	d ₅	d ₁₀	h	b ₁	b ₂	d ₁₃	Sterile O-ring
1"	25.4x1.65 [1.831x0.065]	2.5	22 [0.866]	34.3 [1.354]	34.4 [1.354]	49 [1.929]	66 [2.598]	15.5 [0.61]	11.5 [0.071]	10 [0.394]	4x \varnothing 9 [0.354]	24 x 3.5 [0.945 x 0.1378]
1 1/2"	42.4x1.65 [1.669x0.065]	2.5	32 [1.26]	50.4 [1.984]	50.4 [1.984]	62 [2.44]	79 [3.11]	15.5 [0.61]	11.5 [0.071]	10 [0.394]	4x \varnothing 9 [0.354]	37 x 5 [1.457 x 0.197]
2"	48.3x1.65 [1.902x0.065]	1.6	45 [1.772]	63 [2.48]	63 [2.48]	75 [2.953]	92 [3.622]	15.5 [0.61]	11.5 [0.071]	10 [0.394]	4x \varnothing 9 [0.354]	50 x 5 [1.969 x 0.197]
2 1/2"	60.3x1.65 [2.374x0.065]	1.6	52 [2.047]	75.8 [2.984]	75.9 [2.988]	89 [3.504]	107 [4.213]	15.5 [0.61]	11.5 [0.071]	10 [0.394]	4x \varnothing 9 [0.354]	62 x 5 [2.441 x 0.197]
3"	76.1x1.65 [2.996x0.065]	1.6	60 [2.362]	89.5 [3.524]	89.6 [3.528]	104 [4.094]	125 [4.921]	17.5 [0.689]	13.5 [0.531]	12 [0.472]	8x \varnothing 11 [0.433]	75 x 5 [2.953 x 0.197]
4"	88.9x2.11 [3.5x0.083]	1.6	90 [3.543]	114.2 [4.496]	114.3 [4.5]	135 [5.315]	157 [6.181]	19.5 [0.768]	15.5 [0.61]	14 [0.551]	8x \varnothing 11 [0.433]	100 x 5 [3.937 x 0.197]

1) The allowable pressure unit is MPa; These pressures are only allowed under conditions where appropriate sealing materials are used (temperature range -10 to +140 °C).

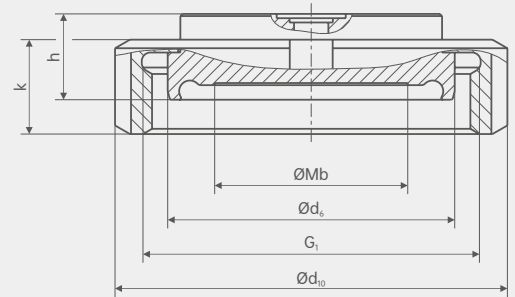
Size mm [in]

Sterile threaded pipe connection, compliant Standard DIN 11864-3

Threaded joint



Grooved coupling nut



Process connection type: DIN 11864-3 A-type sterile threaded pipe connection

Piping standards: Piping conforms to DIN 11866 Class A or DIN 11850 Class 2 standards

DN	Conduit Outer diameter Øx Wall thickness mm [in]	PN ¹⁾	Size mm [in]							
			Mb	d ₆	d ₁₁	G ₁	h	d ₁₀	k	Sterile O-ring
25	29 x 1.5 [1.142 x 0.071]	4	22 [0.866]	42.9 [1.689]	43 [1.693]	RD 52 x 1/6 [2.047 x 1/6]	20 [0.787]	63 [2.48]	21 [0.827]	29 x 1.5 [1.142 x 0.071]
32	35 x 1.5 [1.378 x 0.071]	4	25 [0.984]	48.9 [1.925]	49 [1.929]	RD 58 x 1/6 [2.283 x 1/6]	20 [0.787]	70 [2.756]	21 [0.827]	35 x 1.5 [1.378 x 0.071]
40	41 x 1.5 [1.614 x 0.071]	4	35 [1.378]	54.9 [2.161]	55 [2.165]	RD 65 x 1/6 [2.559 x 1/6]	20 [0.787]	54.9 [2.161]	21 [0.827]	41 x 1.5 [1.614 x 0.071]
50	53 x 1.5 [2.087 x 0.071]	2.5	45 [1.772]	66.9 [2.634]	67 [2.638]	RD 78 x 1/6 [3.071 x 1/6]	20 [0.787]	66.9 [2.634]	22 [0.866]	53 x 1.5 [2.087 x 0.071]
65	70 x 2 [2.756 x 0.078]	2.5	60 [2.362]	84.9 [3.343]	85 [3.346]	RD 95 x 1/6 [3.74 x 1/6]	20 [0.787]	84.9 [3.343]	25 [0.984]	70 x 2 [2.756 x 0.078]
80	85 x 2 [3.346 x 0.078]	2.5	72 [2.835]	98.9 [3.894]	99 [3.898]	RD 110 x 1/4 [4.331 x 1/4]	20 [0.787]	98.9 [3.894]	29 [1.142]	85 x 2 [3.346 x 0.078]
100	104 x 2 [4.094 x 0.078]	2.5	90 [3.543]	118.9 [4.681]	119 [4.685]	RD 130 x 1/4 [5.118 x 1/4]	20 [0.787]	118.9 [4.681]	31 [1.22]	104 x 2 [4.094 x 0.078]

1) The allowable pressure unit is MPa; These pressures are only allowed under conditions where appropriate sealing materials are used (temperature range -10 to +140 °C).

H51-Selection composition

Selection example **H51** H P Y

1 2 3

1.Meter connection specification	A	1 NPT
	B	1/2NPT
	C	1/4NPT
	D	M14*1.5
	E	M20*1.5
	F	M27*2
	G	G 1
	H	G1/2
	I	G1/4
	T ()	Other connection specifications
2.Field connection specification	N	DN15
	O	DN20
	P	DN25
	Q	DN32
	R	DN40
	S	DN50
	T	DN65
	U	DN80
	V	DN100
	T ()	Other connection specifications
3.material	X	Carbon steel
	Y	304SS
	Z	316L
	T ()	Other materials

Instructions:

It indicates that the H50 diaphragm seal is connected to the instrument with the specification of G1/2, and the field connection specification is DN25, and the material is 304 stainless steel.

Product Certification

Compliance and approval; Rodewieg pressure gauges meet key standards and certifications for process measurement technology; Thus guaranteeing the highest reliability in such Settings;